

Terms of Use

EURESYS s.a. shall retain all property rights, title and interest of the documentation of the hardware and the software, and of the trademarks of EURESYS s.a.

All the names of companies and products mentioned in the documentation may be the trademarks of their respective owners.

The licensing, use, leasing, loaning, translation, reproduction, copying or modification of the hardware or the software, brands or documentation of EURESYS s.a. contained in this book, is not allowed without prior notice.

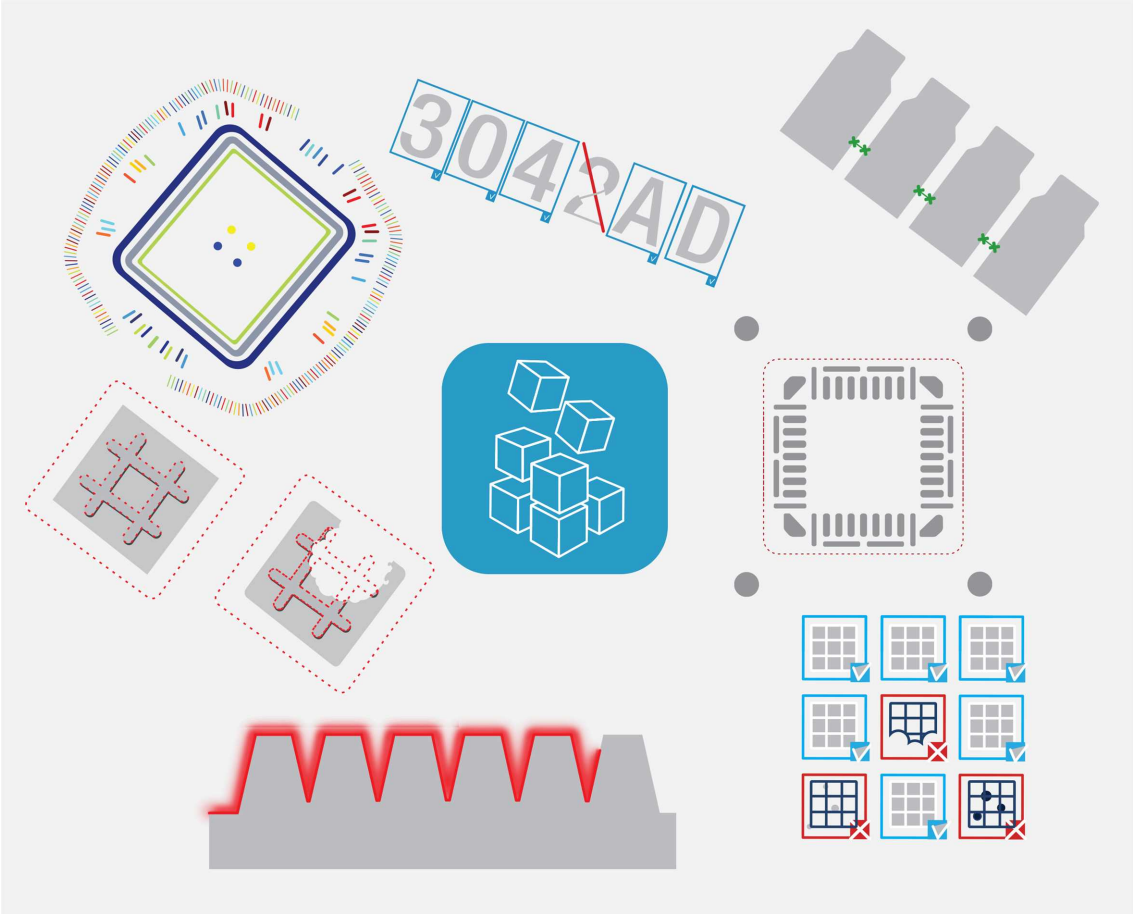
EURESYS s.a. may modify the product specification or change the information given in this documentation at any time, at its discretion, and without prior notice.

EURESYS s.a. shall not be liable for any loss of or damage to revenues, profits, goodwill, data, information systems or other special, incidental, indirect, consequential or punitive damages of any kind arising in connection with the use of the hardware or the software of EURESYS s.a. or resulting of omissions or errors in this documentation.

This documentation is provided with Open eVision 2.11.1 (doc build 1125).
© 2019 EURESYS s.a.

Open eVision

Inspecting Fuses



1. Inspecting Fuses

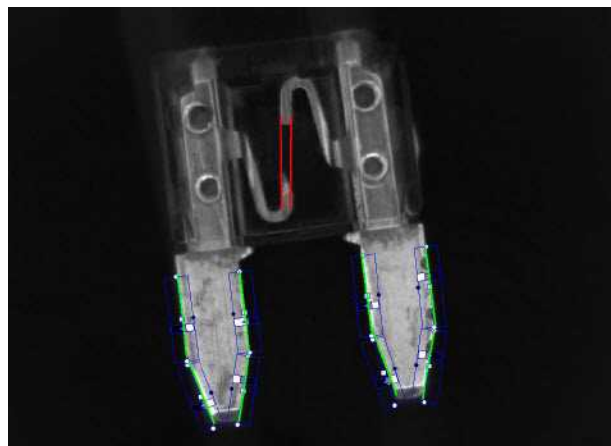
The code of this application and the images used are available in the `Demo Applications` subfolder in your Open eVision installation folder.

Application objective

This application demonstrates how to inspect and check if a given type of fuse is blown or not. The inspection is based on images featuring a type of fuse commonly used in the automotive industry.

**NOTE**

To run this program, you need the EasyFind and EasyGauge licenses.



The inspection mainly consists in finding the position of the fuse and positioning the measurement tools accordingly.

Creating an EasyFind model file

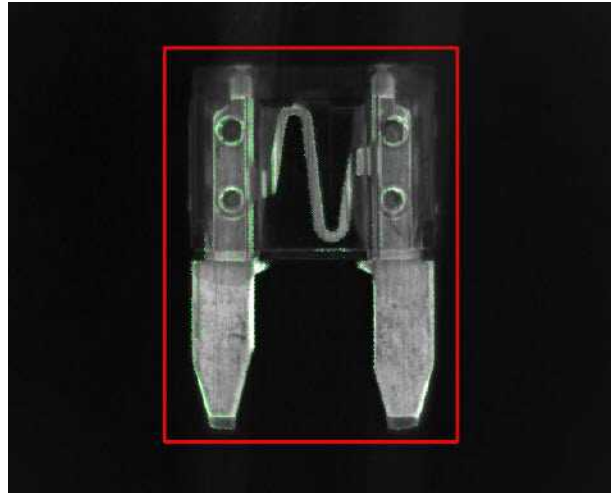
Using Open eVision Studio, create and learn an EasyFind model, as illustrated:

1. Set a ROI (region of interest) to define the pattern (the red rectangle in the illustration).
2. As the orientation of the fuse may vary, set a rotation tolerance of $\pm 45^\circ$.
3. Save the EasyFind model file.



TIP

You will then load this EasyFind model file at the start-up of your application.



Creating an EasyGauge model file

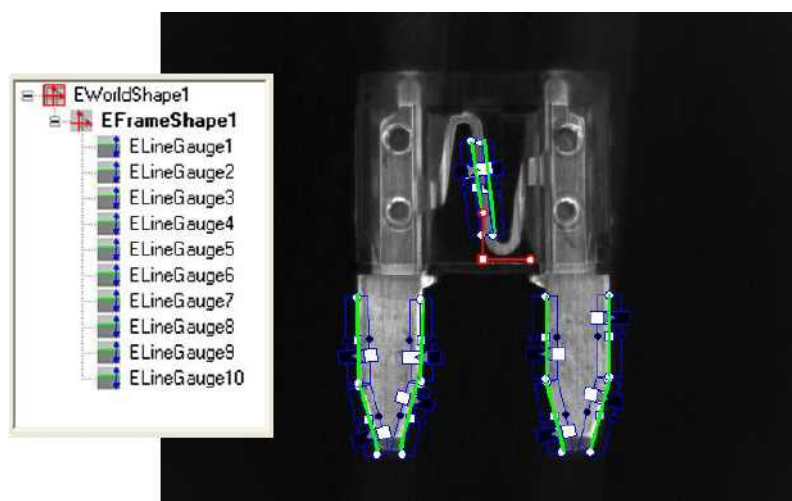
Using Open eVision Studio, measure the fuse leads with ELineGauge tools:

1. Create an EFrameShape with a center corresponding to the center of the pattern defined previously.
2. Attach the 10 ELineGauge tools to the EFrameShape as illustrated.
3. Enable the outliers filtering mechanism for all the ELineGauges.



TIP

You will then load this EasyGauge model file at the start-up of your application.

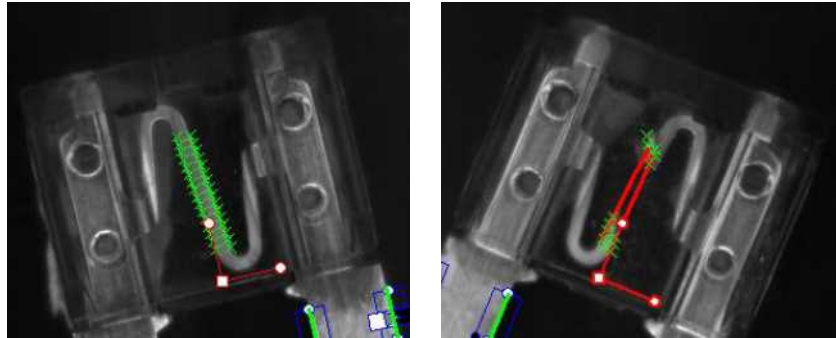


Inspecting the fuse

1. To detect a fuse and check that it appears in the field of view, the application performs a geometrical pattern matching operation.
2. If a fuse is found, the application retrieves its center position and its orientation.

**NOTE**

If no fuse is found in the image, the inspection stops.



3. Before triggering the measurement, the `EFrameShape` and its `ELineGauge` tools are accurately placed according to the position and the orientation of the fuse found at the first step.
4. The application uses 2 of the `ELineGauge` tools to determine whether the fuse is blown or not:
 - The application records the number of valid transitions along each `ELineGauge`.
 - If this number is below a given threshold, the fuse is considered as blown.