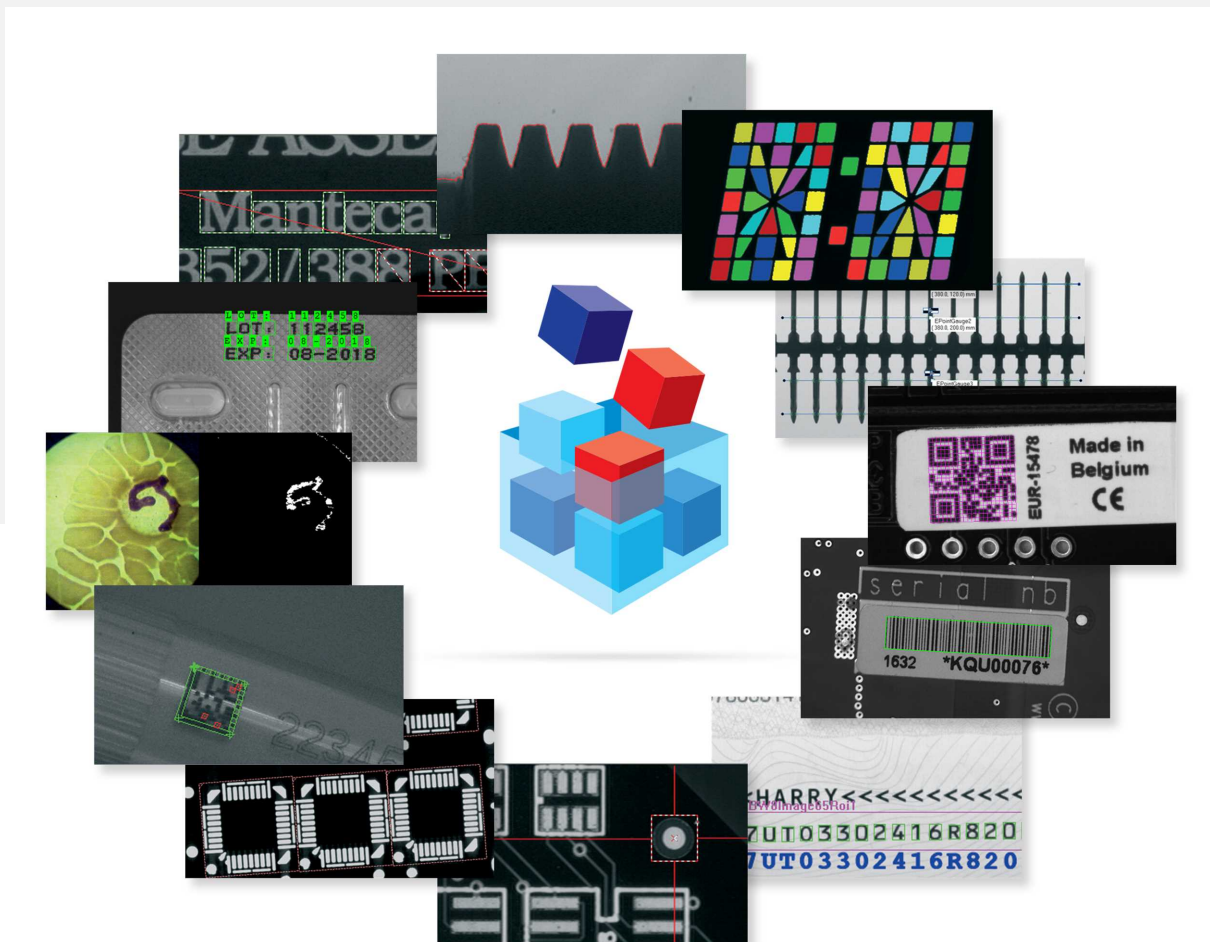


Open eVision

Checking Lot Codes and Mixing with OCR



Terms of Use

EURESYS s.a. shall retain all property rights, title and interest of the documentation of the hardware and the software, and of the trademarks of EURESYS s.a.

All the names of companies and products mentioned in the documentation may be the trademarks of their respective owners.

The licensing, use, leasing, loaning, translation, reproduction, copying or modification of the hardware or the software, brands or documentation of EURESYS s.a. contained in this book, is not allowed without prior notice.

EURESYS s.a. may modify the product specification or change the information given in this documentation at any time, at its discretion, and without prior notice.

EURESYS s.a. shall not be liable for any loss of or damage to revenues, profits, goodwill, data, information systems or other special, incidental, indirect, consequential or punitive damages of any kind arising in connection with the use of the hardware or the software of EURESYS s.a. or resulting of omissions or errors in this documentation.

This documentation is provided with Open eVision 2.6.1 (doc build 1110).
© 2018 EURESYS s.a.

1. Checking Lot Codes and Mixing with OCR

The code of this application and the images used are available in the Demo Applications subfolder in your Open eVision installation folder.

Application objective

This application demonstrates how to check the lot codes of components, for example, during the quality control phase in the semiconductor final packaging process. It uses EasyOCR to check that only components from a specific lot are present in the final packaging.

The application is divided in the following 3 programs that illustrate different parts of the process:

1. Learning lot mixing

- This program learns the characters used in the checking of the lot mixing process.
- You can save the resulting font file.

Note: To run this program, you need the EasyOCR license.

2. Exploring OCR font

- The EasyOCR character recognition relies on the usage of proprietary font files.
- A font file stores the segmentation parameters allowing to extract characters from the inspected image, as well as the set of learned characters.
- Each character is stored as a small bitmap, called a pattern.
- This program shows how to browse the list of patterns stored in an EasyOCR font file.
- It can be used as a font file maintenance tool.

Note: To run this program, you need the EasyOCR license.

3. Checking of lot mixing online

- This program exhibits the final inspection using EasyOCR.
- It reads and reports the characters of each device.

Note: To run this program, you need the EasyOCR, EasyImage and EasyGauge licenses.

Learning lot mixing

Initializing

1. During the learning process, the application needs an image featuring the set of characters used on the device.

In this example it uses the `OCR-B.bmp` image that contains all white uppercase and numeric OCR-B characters on a black background.

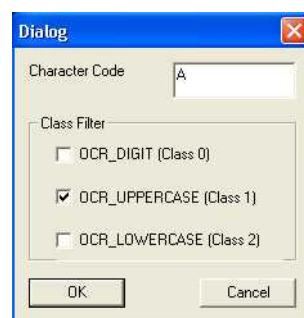
2. The application segments this image to find the character blobs.
3. It draws a red bounding box around each character and extracts the characters.



Learning

Using the `CharCodeDialog` dialog box that is invoked whenever you double-click on a character in the image and that is illustrated below:

1. Associate each character with the corresponding code.
2. For each character, also set its class.



EasyOCR adds the character pattern, the corresponding code and the class into its memory.

Saving

1. Open the **File** menu and click on **Save**.
2. Save the learned characters into an EasyOCR font file to use it later.

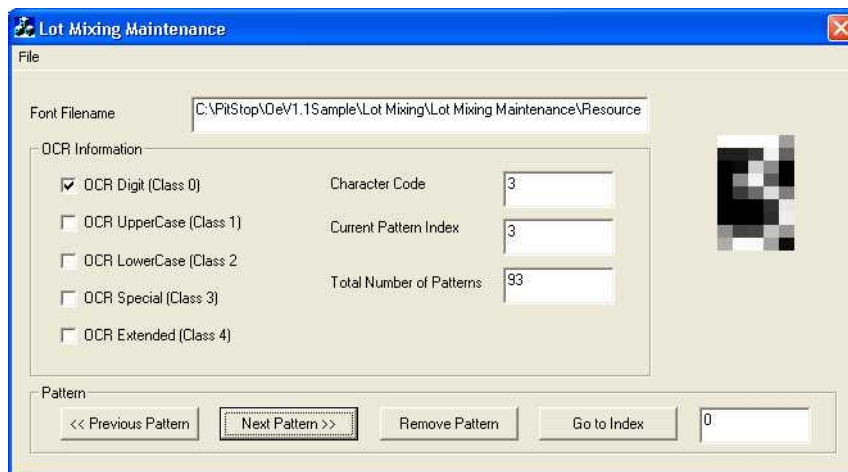


Exploring the OCR font

This application shows how to:

- Load an EasyOCR font file.
- Navigate through the stored patterns.
- Retrieve the associated character code and class.
- Remove a given pattern.

Each pattern in the font file is identified by its index.



To use this example application:

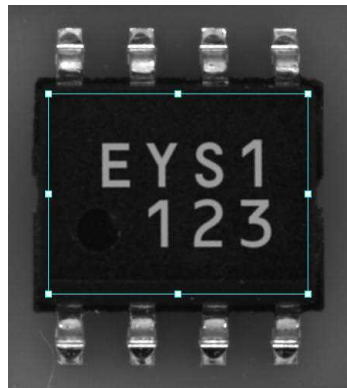
1. Open the **File** menu.
2. Click on **Load Font File** to load a font file.
3. Click on **Save Font File** to save the font file (use the filename `OCR-B.ocr` in this example).

Checking lot mixing online

Initializing the application

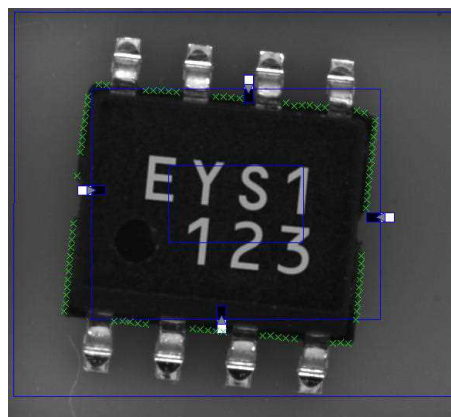
1. The application loads the required font file for characters recognition (`OCR-B.ocr` in this example).

2. It performs the OCR operation only on the device body area (by means of an ROI).

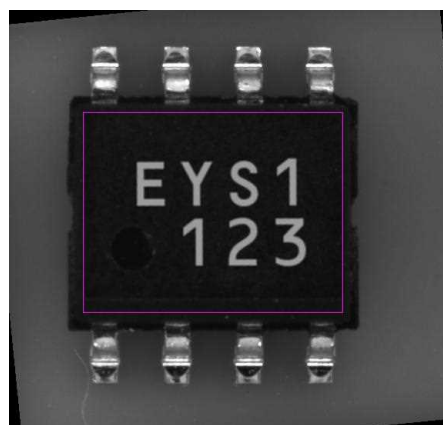


Inspecting the devices

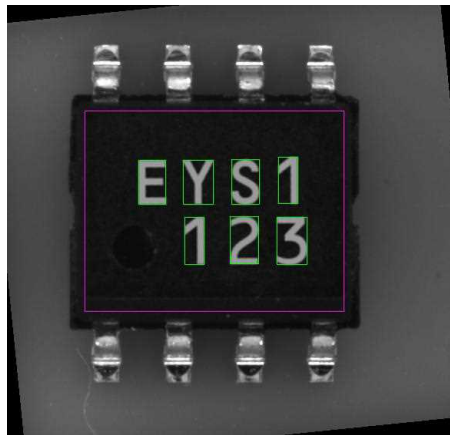
1. As the position of the device varies from one image to another, the application uses an `ERectangleGauge` tool to retrieve the position and the rotation angle of the device body.



2. The application registers and rotates the image to center the device body in the image. This is done on a temporary image storage.
3. The application positions an ROI on the device body area.



4. The application calls the EasyOCR recognition function within the defined ROI area.



5. The application displays the recognized string together with the original source image.

